

## New dimensions of satisfaction



**CleanCash<sup>®</sup>**  
Compatible



Grand Prix 2006

**ELCOM<sup>®</sup>**

### Attractive design



Attractive ergonomic design and modern metallic look



Easy adjustable position of whole ECR for comfortable operation



Fast and silent high quality printing with elegant printer cover opening



Aesthetic space saving solution with hidden cables

### Ergonomic displays



Large LCD alphanumerical display, unique two-colour and two-character high size display.



Variation positions and rotation of displays for different angles of view



Well-arranged 36 characters for perfect displaying of 3 kinds of sales information at once

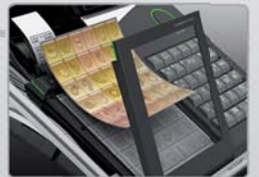


New Black Mask technology – high resolution and contrast

### Unique keyboard



Unique transparent built-in touch keyboard with 36 easy programmable keys



Easy replaceable keys description

### New features



Helpful calculator function



External memory downloader that is able to store plenty receipts.



USB or RS-232 PC communication



Optional Ethernet network



Adhesive fixation legs

# Euro-2100TE

Connection possibility to the any PC



Electronic journal downloader



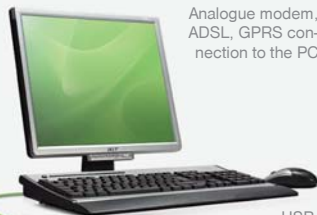
Simple networking of any Elcom cash registers

Euro-2100TE



Euro-500 TE Handy

Analogue modem, ADSL, GPRS connection to the PC



USB connection to the PC

External power supply



CleanCash®

Scanner



Fully programmable „long lifetime“ external keyboard

Two digital scales



Any cash drawer (standard or flip-top)



PC keyboard - available solution for easy and comfortable programming



Technical parametres	Euro-2100TE
Designed for	Retail outlets, supermarkets, bars, coffees, boutiques, etc.
Number of PLU / articles	16000
Number of DPT / groups	30
Number of cashiers	6
Cashier's login	Password, access right
Number of VAT levels	4
Printer	Thermal Citizen LT 1320
Printing speed	20 lines / sec.
Paper roll	Thermal, 1 x 57 mm
PLU name characters	24
Number of characters in logo line	24 or 12
Number of logo lines	9 lines
Programming language	Swedish
Receipts language	Swedish
Reports language	Swedish
Reports	DPT, PLU, cashiers, financial, daily, periodical, hourly, electronic journal, data for PC, stocks, <b>compound</b>
Electronic journal	YES
CleanCash® support	YES
Operator display	LCD FSTN alphanumerical, 20 + 6 + 10 characters, Black Mask
Customer's display	LCD FSTN alphanumerical, 20 + 6 + 10 characters, Black Mask
PC interface	USB / RS232 / RS485
PC software support	YES
Payment terminal interface	RS-232
Scale interface	RS-232
Bar code scanner interface	RS-232 - RJ45 (Modular Jack)
External keyboard	PC keyboard, EK-3000, EK-5000
Cash drawer	Solenoid opening 24 V
Dimensions [mm]	350 x 320 x 210
Weight	2,4 kg
Power supply	adapter 230 V AC / 24 V DC, 1,5 A
Stand-by mode	YES
Power consumption	Max. 36 W
Optional accessories	Internal accumulator, drawer, scale, bar code scanner, External journal downloader, external keyboard, Ethernet module

## The best for successful business

The Euro-2100TE cash register is designed for modern retailers who build their success and growth on the latest technologies and satisfied customers. Special features make the Euro-2100TE useful assistant especially in high standard outlets, groceries, self-service stores, bars, coffees or supermarkets.

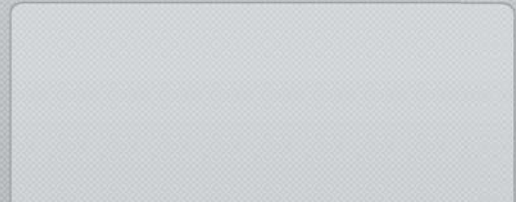
## High technology for you and your customers

The Euro-2100TE is the first middle-class cash register with USB and optional Ethernet interface. It comes with absolutely new, resistant "real" touch keyboard with 36 fully programmable keys which enables to operate more easily and quickly. Thanks to the state-of-the-art Black Mask technology, new adjustable displays provide comprehensive information for both customer and cashier.

## Take advantage of the Euro-2100TE matchless features

Excellent features include practical built-in calculator. All these features help you to increase customers' satisfaction and comfort, operating simplicity and fastness as well as higher Point-of-sale performance and ergonomics.

**ELCOM**® s.r.o.  
 Jesenná 26, 080 01 Prešov, Slovakia  
 Tel.: +421 51 74 64 111, Fax: +421 51 74 64 444  
 E-mail: elcom@elcom.eu, www.elcom.eu



Images are used for illustrative purposes only. Features and specifications given in this leaflet may be subject to change without notice and don't represent a commitment on the part of Elcom.